

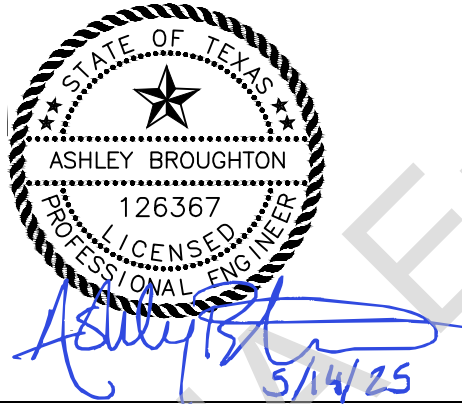
BID TABULATION FOR:

CONSTRUCTION OF THE JUBILEE WASTEWATER TREATMENT PLANT NO. 1 - PHASE 2 & LIFT STATION NO. 2 - PHASE 1
HARRIS COUNTY MUNICIPAL UTILITY DISTRICT NO. 478
CITY OF HOUSTON E.T.J., HARRIS COUNTY, TEXAS
MAY 13, 2025
LJA ENGINEERING, INC.
E. MURPHY
MAY 13, 2025
2542-2406 (9.2)

BID OPENING DATE:**BID OPENING LOCATION:****TABULATION BY:****TABULATION DATE:****LJA JOB NO.**

BIDDER NAME	BASE BID	ALTERNATE BID ITEMS
		PLUS BASE BID
1) SJ SERVICES, LLC	\$1,477,000.00	\$1,897,930.00
2) PELTIER BROTHERS CONSTRUCTION	\$1,656,542.00	\$2,136,709.00
3) ZEUSCON, LLC	\$1,898,435.00	\$2,330,390.00
4) SEQUEIRA CIVIL CONSTRUCTION DBA SC ²	\$2,219,067.62	\$3,024,937.98
5) GAEL, INC	\$2,241,260.00	\$2,721,046.00

CALENDAR DAYS - 180/210



I, Ashley Broughton, PE, hereby certify these bid tabulations to be true and correct.

BID TABULATION FOR:

CONSTRUCTION OF THE JUBILEE WASTEWATER TREATMENT PLANT NO. 1 - PHASE 2 & LIFT STATION NO. 2 - PHASE 1

BID OPENING DATE:
BID OPENING LOCATION:
TABULATION BY:
TABULATION DATE:
LJA JOB NO.

HARRIS COUNTY MUNICIPAL UTILITY DISTRICT NO. 478
CITY OF HOUSTON E.T.J., HARRIS COUNTY, TEXAS
MAY 13, 2025
LJA ENGINEERING, INC.
E. MURPHY
MAY 13, 2025
2542-2406 (9.2)

				1) SJ SERVICES, LLC		2) PELTIER BROTHERS CONSTRUCTION		3) ZEUSCON, LLC		4) SEQUEIRA CIVIL CONSTRUCTION DBA SC²	
NO.	ITEM DESCRIPTION	UNIT	QTY	UNIT COST	TOTAL	UNIT COST	TOTAL	UNIT COST	TOTAL	UNIT COST	TOTAL
BASE BID BASE BID ITEMS											
1.	SITE WORK INCLUDING BUT NOT LIMITED TO SITE GRADING AND HYDROMULCH SEEDING AND DRAINAGE FOR WWTP SITE, AND ALL OTHER REQUIRED APPURTENANCES, AS SHOWN ON PLANS, COMPLETE IN PLACE	LS	1	\$100,000.00	\$100,000.00	\$30,000.00	\$30,000.00	\$16,500.00	\$16,500.00	\$10,113.59	\$10,113.59
2.	14" DIAMETER CONCRETE WET WELL AND VALVE PAD, INCLUDING ACCESS HATCHES, VENT, AND ALL APPURTENANCES AS SHOWN ON DRAWINGS, COMPLETE IN PLACE	LS	1	\$586,741.00	\$586,741.00	\$955,000.00	\$955,000.00	\$733,000.00	\$733,000.00	\$704,158.79	\$704,158.79
3.	20 HP SUBMERSIBLE NON-CLOG PUMP WITH MINIMUM EFFICIENCY OF 59% AT 833 GPM AND 54 FEET T.D.H. WITH TWO PUMPS RUNNING, INCLUDING DISCHARGE ELBOW, GUIDE RAILS, AND ALL APPURTENANCES FOR PROPOSED PUMPS, COMPLETE IN PLACE	EA	3	\$10,000.00	\$30,000.00	\$15,000.00	\$45,000.00	\$50,000.00	\$150,000.00	\$176,482.17	\$529,446.51
4.	SANITARY LIFT STATION AND VALVE PAD PIPING, INCLUDING PIPE, VALVES, FITTINGS, SUPPORTS, AND ALL APPURTENANCES, COMPLETE IN PLACE	LS	1	\$225,000.00	\$225,000.00	\$130,000.00	\$130,000.00	\$275,000.00	\$275,000.00	\$229,452.10	\$229,452.10
5.	5' STANDARD SANITARY MANHOLE ALL DEPTHS INCLUDES EXCAVATION, BEDDING, BACKFILL, COMPLETE IN PLACE	EA	2	\$15,000.00	\$30,000.00	\$25,000.00	\$50,000.00	\$30,000.00	\$60,000.00	\$17,193.11	\$34,386.22
6.	30" AWWA C900 SANITARY SEWER PIPE, ALL DEPTHS, INCLUDING EXCAVATION, BACKFILL AND BEDDING, COMPLETE IN PLACE	LF	42	\$900.00	\$37,800.00	\$400.00	\$16,800.00	\$1,200.00	\$50,400.00	\$442.47	\$18,583.74
7.	27" AWWA C900 SANITARY SEWER PIPE, ALL DEPTHS, INCLUDING EXCAVATION, BACKFILL AND BEDDING, COMPLETE IN PLACE	LF	99	\$825.00	\$81,675.00	\$350.00	\$34,650.00	\$700.00	\$69,300.00	\$423.51	\$41,927.49
8.	12" AWWA C900 FORCE MAIN, ALL DEPTHS, INCLUDING FITTINGS, EXCAVATION, BACKFILL AND BEDDING, COMPLETE IN PLACE	LF	542	\$150.00	\$81,300.00	\$100.00	\$54,200.00	\$230.00	\$124,660.00	\$185.84	\$100,725.28
9.	TRENCH SAFETY SYSTEM, ALL DEPTHS, COMPLETE IN PLACE	LF	683	\$2.00	\$1,366.00	\$1.00	\$683.00	\$15.00	\$10,245.00	\$8.22	\$5,614.26
10.	CONNECT PROPOSED SANITARY SEWER TO SANITARY SEWER MANHOLE (BY OTHERS) INCLUDE ALL NECESSARY ADAPTORS AND CONNECTORS OR STUB OUT AND PLUG, COMPLETE IN PLACE	LS	1	\$6,000.00	\$6,000.00	\$500.00	\$500.00	\$5,000.00	\$5,000.00	\$4,930.38	\$4,930.38
11.	1" SCHEDULE 40 PVC WATER LINE, ALL DEPTHS, INCLUDING FITTINGS, EXCAVATION, BACKFILL AND BEDDING COMPLETE IN PLACE	LF	130	\$100.00	\$13,000.00	\$25.00	\$3,250.00	\$70.00	\$9,100.00	\$32.87	\$4,273.10
12.	PROVIDE AND INSTALL REDUCED PRESSURE BACKFLOW PREVENTER, NON-FREEZE HOSE BIBB, AND ALL NECESSARY APPURTENANCES, COMPLETE IN PLACE	LS	1	\$6,500.00	\$6,500.00	\$4,000.00	\$4,000.00	\$12,500.00	\$12,500.00	\$7,964.45	\$7,964.45
13.	COORDINATION WITH EQUIPMENT PROVIDERS FOR INSTALLATION OF LEASED EQUIPMENT AND ALL ITEMS NOT PROVIDED BY EQUIPMENT PROVIDERS AS DESCRIBED IN EQUIPMENT PROVIDERS SCOPE OF SERVICES AND NOT COVERED IN SEPARATE BID ITEM (SEE EXHIBIT A, INCLUDED AFTER BID FORM) FOR A COMPLETE AND OPERATIONAL WWTP, COMPLETE IN PLACE	LS	1	\$20,000.00	\$20,000.00	\$15,000.00	\$15,000.00	\$5,000.00	\$5,000.00	\$59,417.35	\$59,417.35
14.	WASTEWATER TREATMENT EQUIPMENT FOUNDATION INCLUDING CRUSHED STONE BASE AND ALL REQUIRED APPURTENANCES, AS SHOWN ON PLANS, COMPLETE IN PLACE	LS	1	\$20,000.00	\$20,000.00	\$100,000.00	\$100,000.00	\$30,000.00	\$30,000.00	\$28,444.48	\$28,444.48
15.	6" THICK CRUSHED CONCRETE ACCESS ROAD, INCLUDING 8" LIME OR CEMENT STABILIZED SUBGRADE EXTENDING 1' OUTSIDE DRIVEWAY, COMPLETE IN PLACE	SY	497	\$55.00	\$27,335.00	\$50.00	\$24,850.00	\$75.00	\$37,275.00	\$78.38	\$38,954.86

BID TABULATION FOR:

CONSTRUCTION OF THE JUBILEE WASTEWATER TREATMENT PLANT NO. 1 - PHASE 2 & LIFT STATION NO. 2 - PHASE 1

BID OPENING DATE:
BID OPENING LOCATION:
TABULATION BY:
TABULATION DATE:
LJA JOB NO.

HARRIS COUNTY MUNICIPAL UTILITY DISTRICT NO. 478
CITY OF HOUSTON E.T.J., HARRIS COUNTY, TEXAS
MAY 13, 2025
LJA ENGINEERING, INC.
E. MURPHY
MAY 13, 2025
2542-2406 (9.2)

NO.	ITEM DESCRIPTION	UNIT	QTY	1) SJ SERVICES, LLC		2) PELTIER BROTHERS CONSTRUCTION		3) ZEUSCON, LLC		4) SEQUEIRA CIVIL CONSTRUCTION DBA SC ²	
				UNIT COST	TOTAL	UNIT COST	TOTAL	UNIT COST	TOTAL	UNIT COST	TOTAL
16.	6' CHAIN LINK FENCE WITH THREE STRANDS OF BARBED WIRE, AND ALL APPURTENANCES, COMPLETE IN PLACE	LF	441	\$60.00	\$26,460.00	\$38.00	\$16,758.00	\$35.00	\$15,435.00	\$41.72	\$18,398.52
17.	REMOVE AND PROPERLY DISPOSE OF EXIST CHAIN LINK FENCE, COMPLETE IN PLACE	LF	414	\$10.00	\$4,140.00	\$4.00	\$1,656.00	\$10.00	\$4,140.00	\$25.28	\$10,465.92
18.	ADD 400A 480V FEEDER WITH ALL PULL BOXES, DISCONNECTS, CONTROL PANEL (INCLUDING CONCRETE FOUNDATION), SERVICE RACK, CONDUIT, WIRE AND DUCT BANKS AS NECESSARY FOR NEW LIFT STATION. COMPLETE IN PLACE	LS	1	\$135,000.00	\$135,000.00	\$130,000.00	\$130,000.00	\$175,000.00	\$175,000.00	\$193,632.00	\$193,632.00
19.	110A 480V SIZE 3 BLOWER STARTER WITH ALL BREAKERS, FEEDERS, CONTROLS, CONDUIT, WIRE AND DUCT BANKS AS REQUIRED. COMPLETE AND IN PLACE	LS	1	\$23,000.00	\$23,000.00	\$23,000.00	\$23,000.00	\$44,000.00	\$44,000.00	\$54,565.92	\$54,565.92
20.	UPGRADE SERVICE ENTRANCE FROM 800A 80% TO 800A 100% INCLUDING ALL FUSES. COMPLETE AND IN PLACE	LS	1	\$2,500.00	\$2,500.00	\$2,300.00	\$2,300.00	\$10,000.00	\$10,000.00	\$36,947.50	\$36,947.50
21.	ADD 300A 3P 480 BREAKER TO PANEL "HV". COMPLETE AND IN PLACE	LS	1	\$3,600.00	\$3,600.00	\$4,000.00	\$4,000.00	\$10,000.00	\$10,000.00	\$49,062.06	\$49,062.06
SUBTOTAL BASE BID BASE BID ITEMS					\$1,461,417.00		\$1,641,647.00		\$1,846,555.00		\$2,181,464.52
BASE BID MISCELLANEOUS ITEMS											
1.	STORM WATER POLLUTION PREVENTION PLAN, INCLUDING ADMINISTRATION, INSTALLATION, MAINTENANCE, AND REMOVAL AS REQUIRED BY THE PLANS AND AS DIRECTED BY THE ENGINEER, TO BE MAINTAINED UNTIL CONTRACTOR NOTICE OF TERMINATION IS SUBMITTED, COMPLETE IN PLACE	LS	1	\$2,500.00	\$2,500.00	\$5,000.00	\$5,000.00	\$2,400.00	\$2,400.00	\$12,641.99	\$12,641.99
2.	FILTER FABRIC FENCE, (TO BE USED ONLY AS DIRECTED BY THE ENGINEER), COMPLETE IN PLACE	LF	1287	\$4.00	\$5,148.00	\$3.00	\$3,861.00	\$5.00	\$6,435.00	\$2.78	\$3,577.86
3.	DEWATERING FOR STRUCTURE, AS REQUIRED BY SOIL CONDITIONS, (TO BE USED ONLY AS DIRECTED BY THE ENGINEER), COMPLETE IN PLACE	LS	1	\$1.00	\$1.00	\$1.00	\$1.00	\$10,000.00	\$10,000.00	\$1,264.20	\$1,264.20
4.	DEWATERING OF LINE WORK (TO BE USED ONLY AS DIRECTED BY THE ENGINEER), COMPLETE IN PLACE	LF	683	\$1.00	\$683.00	\$1.00	\$683.00	\$15.00	\$10,245.00	\$6.32	\$4,316.56
5.	INSTALLATION, MAINTAINANCE & REMOVAL OF CONCRETE TRUCK WASHOUT, (TO BE USED ONLY AS DIRECTED BY THE ENGINEER), COMPLETE IN PLACE	LS	1	\$1,000.00	\$1,000.00	\$600.00	\$600.00	\$4,000.00	\$4,000.00	\$3,160.50	\$3,160.50
6.	INSTALLATION, MAINTAINANCE & REMOVAL OF STABILIZED CONSTRUCTION EXIT, (TO BE USED ONLY AS DIRECTED BY THE ENGINEER), COMPLETE IN PLACE	LS	1	\$1,500.00	\$1,500.00	\$1,500.00	\$1,500.00	\$7,500.00	\$7,500.00	\$6,320.99	\$6,320.99
7.	CONTROL OF SURFACE WATER AS NEEDED FOR CONSTRUCTION, COMPLETE IN PLACE	LS	1	\$1.00	\$1.00	\$500.00	\$500.00	\$5,000.00	\$5,000.00	\$632.10	\$632.10
8.	EXTRA HYDROMULCH SEEDING, (TO BE USED ONLY AS DIRECTED BY THE ENGINEER), COMPLETE IN PLACE	AC	0.5	\$4,000.00	\$2,000.00	\$2,500.00	\$1,250.00	\$5,000.00	\$2,500.00	\$632.10	\$316.05
9.	EXTRA CEMENT STABILIZED SAND, (1.5 SACKS OF CEMENT PER CUBIC YARD CEMENT STABILIZED SAND), (TO BE USED ONLY AS DIRECTED BY THE ENGINEER), COMPLETE IN PLACE	CY	5	\$50.00	\$250.00	\$100.00	\$500.00	\$60.00	\$300.00	\$63.21	\$316.05
10.	EXTRA 4,000 PSI CONCRETE WITH REINFORCING STEEL, (TO BE USED ONLY AS DIRECTED BY THE ENGINEER), COMPLETE IN PLACE	CY	5	\$500.00	\$2,500.00	\$200.00	\$1,000.00	\$700.00	\$3,500.00	\$1,011.36	\$5,056.80

FRN F-1386

LJA Engineering, Inc.

BID TABULATION FOR:

BID OPENING DATE:
BID OPENING LOCATION:
TABULATION BY:
TABULATION DATE:
LJA JOB NO.

CONSTRUCTION OF THE JUBILEE WASTEWATER TREATMENT PLANT NO. 1 - PHASE 2 & LIFT STATION NO. 2 - PHASE 1

HARRIS COUNTY MUNICIPAL UTILITY DISTRICT NO. 478
CITY OF HOUSTON E.T.J., HARRIS COUNTY, TEXAS
MAY 13, 2025
LJA ENGINEERING, INC.
E. MURPHY
MAY 13, 2025
2542-2406 (9.2)

				1) SJ SERVICES, LLC		2) PELTIER BROTHERS CONSTRUCTION		3) ZEUSCON, LLC		4) SEQUEIRA CIVIL CONSTRUCTION DBA SC²	
NO.	ITEM DESCRIPTION	UNIT	QTY	UNIT COST	TOTAL	UNIT COST	TOTAL	UNIT COST	TOTAL	UNIT COST	TOTAL
SUBTOTAL BASE BID MISCELLANEOUS ITEMS					\$15,583.00		\$14,895.00		\$51,880.00		\$37,603.10
ALTERNATE BID ITEMS ALTERNATE ITEMS											
1.	8' TALL DECORATIVE CONCRETE FENCE & GATE PER ABER FENCE & SUPPLY COMPANY (CONTACT STEVE GARZA AT 832-265-1219), COMPLETE IN PLACE, TO BE USED IN LIEU OF BASE BID ITEM NO. 16	LF	2312	\$190.00	\$439,280.00	\$213.00	\$492,456.00	\$190.00	\$439,280.00	\$347.65	\$803,766.80
2.	REMOVE AND PROPERLY DISPOSE OF EXIST CHAIN LINK FENCE, COMPLETE IN PLACE, TO BE USED IN LIEU OF BASE BID ITEM NO. 17	LF	1225	\$10.00	\$12,250.00	\$5.00	\$6,125.00	\$10.00	\$12,250.00	\$25.28	\$30,968.00
SUBTOTAL ALTERNATE BID ITEMS ALTERNATE ITEMS					\$451,530.00		\$498,581.00		\$451,530.00		\$834,734.80
BID SUMMARY											
BASE BID BASE BID ITEMS					\$1,461,417.00		\$1,641,647.00		\$1,846,555.00		\$2,181,464.52
BASE BID MISCELLANEOUS ITEMS					\$15,583.00		\$14,895.00		\$51,880.00		\$37,603.10
TOTAL AMOUNT BASE BID					\$1,477,000.00		\$1,656,542.00		\$1,898,435.00		\$2,219,067.62
ALTERNATE BID ITEMS											
TOTAL AMOUNT BASE BID					\$1,477,000.00		\$1,656,542.00		\$1,898,435.00		\$2,219,067.62
DEDUCT BASE BID ITEMS ITEM NO. 16					-\$26,460.00		-\$16,758.00		-\$15,435.00		-\$18,398.52
DEDUCT BASE BID ITEMS ITEM NO. 17					-\$4,140.00		-\$1,656.00		-\$4,140.00		-\$10,465.92
ALTERNATE ITEMS					\$451,530.00		\$498,581.00		\$451,530.00		\$834,734.80
TOTAL ALTERNATE BID ITEMS PLUS BASE BID					\$1,897,930.00		\$2,136,709.00		\$2,330,390.00		\$3,024,937.98

BID TABULATION FOR:

CONSTRUCTION OF THE JUBILEE WASTEWATER TREATMENT PLANT NO. 1 - PHASE 2 & LIFT STATION NO. 2 - PHASE 1

BID OPENING DATE:
BID OPENING LOCATION:
TABULATION BY:
TABULATION DATE:
LJA JOB NO.

HARRIS COUNTY MUNICIPAL UTILITY DISTRICT NO. 478
CITY OF HOUSTON E.T.J., HARRIS COUNTY, TEXAS
MAY 13, 2025
LJA ENGINEERING, INC.
E. MURPHY
MAY 13, 2025
2542-2406 (9.2)

				5) GAEL, INC	
NO.	ITEM DESCRIPTION	UNIT	QTY	UNIT COST	TOTAL
BASE BID BASE BID ITEMS					
1.	SITE WORK INCLUDING BUT NOT LIMITED TO SITE GRADING AND HYDROMULCH SEEDING AND DRAINAGE FOR WWTP SITE, AND ALL OTHER REQUIRED APPURTENANCES, AS SHOWN ON PLANS, COMPLETE IN PLACE	LS	1	\$23,860.00	\$23,860.00
2.	14' DIAMETER CONCRETE WET WELL AND VALVE PAD, INCLUDING ACCESS HATCHES, VENT, AND ALL APPURTENANCES AS SHOWN ON DRAWINGS, COMPLETE IN PLACE	LS	1	\$1,109,209.00	\$1,109,209.00
3.	20 HP SUBMERSIBLE NON-CLOG PUMP WITH MINIMUM EFFICIENCY OF 59% AT 833 GPM AND 54 FEET T.D.H. WITH TWO PUMPS RUNNING, INCLUDING DISCHARGE ELBOW, GUIDE RAILS, AND ALL APPURTENANCES FOR PROPOSED PUMPS, COMPLETE IN PLACE	EA	3	\$43,004.00	\$129,012.00
4.	SANITARY LIFT STATION AND VALVE PAD PIPING, INCLUDING PIPE, VALVES, FITTINGS, SUPPORTS, AND ALL APPURTENANCES, COMPLETE IN PLACE	LS	1	\$220,952.00	\$220,952.00
5.	5' STANDARD SANITARY MANHOLE ALL DEPTHS INCLUDES EXCAVATION, BEDDING, BACKFILL, COMPLETE IN PLACE	EA	2	\$25,925.00	\$51,850.00
6.	30" AWWA C900 SANITARY SEWER PIPE, ALL DEPTHS, INCLUDING EXCAVATION, BACKFILL AND BEDDING, COMPLETE IN PLACE	LF	42	\$2,184.00	\$91,728.00
7.	27" AWWA C900 SANITARY SEWER PIPE, ALL DEPTHS, INCLUDING EXCAVATION, BACKFILL AND BEDDING, COMPLETE IN PLACE	LF	99	\$1,402.00	\$138,798.00
8.	12" AWWA C900 FORCE MAIN, ALL DEPTHS, INCLUDING FITTINGS, EXCAVATION, BACKFILL AND BEDDING, COMPLETE IN PLACE	LF	542	\$156.00	\$84,552.00
9.	TRENCH SAFETY SYSTEM, ALL DEPTHS, COMPLETE IN PLACE	LF	683	\$30.00	\$20,490.00
10.	CONNECT PROPOSED SANITARY SEWER TO SANITARY SEWER MANHOLE (BY OTHERS) INCLUDE ALL NECESSARY ADAPTORS AND CONNECTORS OR STUB OUT AND PLUG, COMPLETE IN PLACE	LS	1	\$5,000.00	\$5,000.00
11.	1" SCHEDULE 40 PVC WATER LINE, ALL DEPTHS, INCLUDING FITTINGS, EXCAVATION, BACKFILL AND BEDDING COMPLETE IN PLACE	LF	130	\$60.00	\$7,800.00
12.	PROVIDE AND INSTALL REDUCED PRESSURE BACKFLOW PREVENTER, NON-FREEZE HOSE BIBB, AND ALL NECESSARY APPURTENANCES, COMPLETE IN PLACE	LS	1	\$7,513.00	\$7,513.00
13.	COORDINATION WITH EQUIPMENT PROVIDERS FOR INSTALLATION OF LEASED EQUIPMENT AND ALL ITEMS NOT PROVIDED BY EQUIPMENT PROVIDERS AS DESCRIBED IN EQUIPMENT PROVIDERS SCOPE OF SERVICES AND NOT COVERED IN SEPARATE BID ITEM (SEE EXHIBIT A, INCLUDED AFTER BID FORM) FOR A COMPLETE AND OPERATIONAL WWTP, COMPLETE IN PLACE	LS	1	\$20,280.00	\$20,280.00
14.	WASTEWATER TREATMENT EQUIPMENT FOUNDATION INCLUDING CRUSHED STONE BASE AND ALL REQUIRED APPURTENANCES, AS SHOWN ON PLANS, COMPLETE IN PLACE	LS	1	\$30,000.00	\$30,000.00
15.	6" THICK CRUSHED CONCRETE ACCESS ROAD, INCLUDING 8" LIME OR CEMENT STABILIZED SUBGRADE EXTENDING 1' OUTSIDE DRIVEWAY, COMPLETE IN PLACE	SY	497	\$67.00	\$33,299.00

BID TABULATION FOR:

CONSTRUCTION OF THE JUBILEE WASTEWATER TREATMENT PLANT NO. 1 - PHASE 2 & LIFT STATION NO. 2 - PHASE 1

BID OPENING DATE:
BID OPENING LOCATION:
TABULATION BY:
TABULATION DATE:
LJA JOB NO.

HARRIS COUNTY MUNICIPAL UTILITY DISTRICT NO. 478
CITY OF HOUSTON E.T.J., HARRIS COUNTY, TEXAS
MAY 13, 2025
LJA ENGINEERING, INC.
E. MURPHY
MAY 13, 2025
2542-2406 (9.2)

				5) GAEI, INC	
NO.	ITEM DESCRIPTION	UNIT	QTY	UNIT COST	TOTAL
16.	6' CHAIN LINK FENCE WITH THREE STRANDS OF BARBED WIRE, AND ALL APPURTENANCES, COMPLETE IN PLACE	LF	441	\$40.00	\$17,640.00
17.	REMOVE AND PROPERLY DISPOSE OF EXIST CHAIN LINK FENCE, COMPLETE IN PLACE	LF	414	\$12.00	\$4,968.00
18.	ADD 400A 480V FEEDER WITH ALL PULL BOXES, DISCONNECTS, CONTROL PANEL (INCLUDING CONCRETE FOUNDATION), SERVICE RACK, CONDUIT, WIRE AND DUCT BANKS AS NECESSARY FOR NEW LIFT STATION. COMPLETE IN PLACE	LS	1	\$154,594.00	\$154,594.00
19.	110A 480V SIZE 3 BLOWER STARTER WITH ALL BREAKERS, FEEDERS, CONTROLS, CONDUIT, WIRE AND DUCT BANKS AS REQUIRED. COMPLETE AND IN PLACE	LS	1	\$15,950.00	\$15,950.00
20.	UPGRADE SERVICE ENTRANCE FROM 800A 80% TO 800A 100% INCLUDING ALL FUSES. COMPLETE AND IN PLACE	LS	1	\$2,750.00	\$2,750.00
21.	ADD 300A 3P 480 BREAKER TO PANEL "HV". COMPLETE AND IN PLACE	LS	1	\$5,500.00	\$5,500.00
SUBTOTAL BASE BID BASE BID ITEMS					\$2,175,745.00

BASE BID MISCELLANEOUS ITEMS

1.	STORM WATER POLLUTION PREVENTION PLAN, INCLUDING ADMINISTRATION, INSTALLATION, MAINTENANCE, AND REMOVAL AS REQUIRED BY THE PLANS AND AS DIRECTED BY THE ENGINEER, TO BE MAINTAINED UNTIL CONTRACTOR NOTICE OF TERMINATION IS SUBMITTED, COMPLETE IN PLACE	LS	1	\$13,148.00	\$13,148.00
2.	FILTER FABRIC FENCE, (TO BE USED ONLY AS DIRECTED BY THE ENGINEER), COMPLETE IN PLACE	LF	1287	\$8.00	\$10,296.00
3.	DEWATERING FOR STRUCTURE, AS REQUIRED BY SOIL CONDITIONS, (TO BE USED ONLY AS DIRECTED BY THE ENGINEER), COMPLETE IN PLACE	LS	1	\$5,000.00	\$5,000.00
4.	DEWATERING OF LINE WORK (TO BE USED ONLY AS DIRECTED BY THE ENGINEER), COMPLETE IN PLACE	LF	683	\$27.00	\$18,441.00
5.	INSTALLATION, MAINTAINANCE & REMOVAL OF CONCRETE TRUCK WASHOUT, (TO BE USED ONLY AS DIRECTED BY THE ENGINEER), COMPLETE IN PLACE	LS	1	\$3,800.00	\$3,800.00
6.	INSTALLATION, MAINTAINANCE & REMOVAL OF STABILIZED CONSTRUCTION EXIT, (TO BE USED ONLY AS DIRECTED BY THE ENGINEER), COMPLETE IN PLACE	LS	1	\$4,800.00	\$4,800.00
7.	CONTROL OF SURFACE WATER AS NEEDED FOR CONSTRUCTION, COMPLETE IN PLACE	LS	1	\$5,000.00	\$5,000.00
8.	EXTRA HYDROMULCH SEEDING, (TO BE USED ONLY AS DIRECTED BY THE ENGINEER), COMPLETE IN PLACE	AC	0.5	\$3,500.00	\$1,750.00
9.	EXTRA CEMENT STABILIZED SAND, (1.5 SACKS OF CEMENT PER CUBIC YARD CEMENT STABILIZED SAND), (TO BE USED ONLY AS DIRECTED BY THE ENGINEER), COMPLETE IN PLACE	CY	5	\$56.00	\$280.00
10.	EXTRA 4,000 PSI CONCRETE WITH REINFORCING STEEL, (TO BE USED ONLY AS DIRECTED BY THE ENGINEER), COMPLETE IN PLACE	CY	5	\$600.00	\$3,000.00

BID TABULATION FOR:

BID OPENING DATE:
BID OPENING LOCATION:
TABULATION BY:
TABULATION DATE:
LJA JOB NO.

CONSTRUCTION OF THE JUBILEE WASTEWATER TREATMENT PLANT NO. 1 - PHASE 2 & LIFT STATION NO. 2 - PHASE 1

HARRIS COUNTY MUNICIPAL UTILITY DISTRICT NO. 478
CITY OF HOUSTON E.T.J., HARRIS COUNTY, TEXAS
MAY 13, 2025
LJA ENGINEERING, INC.
E. MURPHY
MAY 13, 2025
2542-2406 (9.2)

5) GAEL, INC					
NO.	ITEM DESCRIPTION	UNIT	QTY	UNIT COST	TOTAL
SUBTOTAL BASE BID MISCELLANEOUS ITEMS					\$65,515.00

ALTERNATE BID ITEMS ALTERNATE ITEMS					
1.	8' TALL DECORATIVE CONCRETE FENCE & GATE PER ABER FENCE & SUPPLY COMPANY (CONTACT STEVE GARZA AT 832-265-1219), COMPLETE IN PLACE, TO BE USED IN LIEU OF BASE BID ITEM NO. 16	LF	2312	\$212.00	\$490,144.00
2.	REMOVE AND PROPERLY DISPOSE OF EXIST CHAIN LINK FENCE, COMPLETE IN PLACE, TO BE USED IN LIEU OF BASE BID ITEM NO. 17	LF	1225	\$10.00	\$12,250.00

SUBTOTAL ALTERNATE BID ITEMS ALTERNATE ITEMS \$502,394.00

BID SUMMARY

BASE BID BASE BID ITEMS	\$2,175,745.00
BASE BID MISCELLANEOUS ITEMS	\$65,515.00
TOTAL AMOUNT BASE BID	\$2,241,260.00

ALTERNATE BID ITEMS

TOTAL AMOUNT BASE BID	\$2,241,260.00
DEDUCT BASE BID ITEMS ITEM NO. 16	-\$17,640.00
DEDUCT BASE BID ITEMS ITEM NO. 17	-\$4,968.00
ALTERNATE ITEMS	\$502,394.00
TOTAL ALTERNATE BID ITEMS PLUS BASE BID	\$2,721,046.00